



Editors: Tom Raschke (tomraschke50@gmail.com) or 608-219-9243
Stan Nichols (sanicho1@facstaff.wisc.edu)

Club Web site: <http://www.yaharafishingclub.org>

Walleyes and Rivers

By Stan Nichols

Springtime in Wisconsin-rivers and walleyes! There are two reasons for fishing spring walleyes in Wisconsin; 1) many rivers are the only legal place to fish for walleyes before the general opening of the fishing season, 2) walleyes are on spawning runs up rivers so they tend to congregate, especially in places below dams. Jeff Bennett, a fishing guide from the Lake Puckaway area, presented tricks and tips for taking spring walleyes at the April YFC meeting.

Even with walleye spawning runs, fishing is still fishing, so you have to find them. Places to look include:

Staging areas, primarily the mouths of rivers: These areas will become ice-free before adjoining lakes open up.

Currents: Fish like to stay out of strong currents so look for them:

- In current seams (where still water and strong currents come together)
- Eddies, where the current comes back on itself
- Natural current breaks like inside river bends, many times sediment drops here so a flat is formed
- At the mouth of feeder streams.
- Where two rivers come together
- Areas below dams where eddies form
- Behind natural obstructions like rock piles, logs, and rocky points
- By man made obstructions like wing dams, bridge pilings, boat tie downs,
- navigation channel markers, and places where boat propellers scour out holes.
- Along rip-rap shorelines
- Slight holes in the bottom

Temperature: look for areas where water temperature is warmer than other areas. This usually means shallow water. Often anglers fish in too deep of water.

Feeding areas: look for areas where baitfish congregate (this can be all of the above).

The main technique is slowly (0.6 to 1 m.p.h) trolling upstream. Precise boat control equals success.

A two-way rig is standard with a heavier jig on the bottom (average around 1/4 oz) but this varies with current speed and depth- a jig you can feel bottom with. This jig is baited with a minnow or plastic. Up the line, attached to a swivel is a second dropper line. Jeff likes to use a 1/32 oz jig baited with a half night crawler. But again this varies a lot. Some anglers use only a short dropper to the heavy jig to stay closer to the bottom. Some anglers use a long line on the second dropper, especially if they are trolling something like a floating Rapalla on the up-line.

Another technique is vertical jigging. Again the boat may be moving slowly up stream to keep the line and jig as straight in the water as possible. Weight of jig and baiting options again vary with water speed and depth.

Dragging the jig along bottom is also effective. This can be done by slow trolling upstream, anchoring on a shallow flat and casting, or by casting from shore. A straight retrieve works best in cold water rather than "hopping" the jig.

Jeff depends on standard electronics like a trolling motor, depth finder, and GPS unit. His one warning is get a trolling motor with plenty of power. You need it to troll upstream in a strong current. He is also very fond of side scanning sonars.

For equipment he likes a well-balanced 6.5 to 7 foot rod, spooled with 6-to-8 pound superline and a leader of 12-pound fluorocarbon. For live bait he likes fat head minnows, emerald shiners, half night-crawlers, and large or jumbo leeches. For lures he likes the old floating #8 or #9 Rapallas in a purple iridescent color or ringworm and paddletail plastics.

If you want more information or want to book Jeff for some on-the-water lessons, either for walleyes or a variety of other fish he can be contacted at 920-394-3114 (home) or 920-291-6799 (cell) or look on his web page www.jnbguidedfishing.com

Fish Fry Reminder

June 20, 2014, Sept. 12, 2014 - Fish Fry

Important cub fund raiser at St. Paul's Lutheran Church. All members are encouraged to help.

OUTINGS UPDATE May 2014

By Tom Klein

Panfish outing, May 14th, Lake to be decided – Waubesa, Delavan, or Clear. This is a casual outing headed by the Rock Valley Anglers club. If you are interested in joining up with our partnership club and meeting some new folks, and need more detail, please contact the RVA outings director, Rod Bondule. His email is tvfishermn@charter.net, his cell (815) 389 4584

Walleye, lower Green Bay, May 15 – 18th, a Thursday through Sunday. You can fish one, some, or all days. Lodging will be at the Bay Motel, 1301 S. Military Rd., Green Bay, WI. 54304, phone (920)484 3441 or toll free (888)775 7590. This location allows access to either the West or East shore of Green Bay depending on the bite. There is ample parking for rigs at the motel. I cannot make this outing so need someone to step up to the plate and arrange details for boaters and non boaters. I will have a sign up at the May 13th meeting.

Memorial weekend, May 23-26, plus now May 30th thru June 2nd. Small mouth, Bay De Noc. Basically this is the North end of Green Bay, sounds like an exciting trip with lots of big Smallies plus Walleye in a pristine setting. Our partner club, Rock Valley Anglers have been there often and have reports of 50 plus fish days. Please contact Jim Pankratz to sign up, lodging is going fast.

June 22th, a Sunday. Salmon and Trout, a charter out of Port Washington with Captain John Iverson. Many of you have fished w/ Capt. Iverson before and he always has some fish in the box. The rate is \$450 for 5 hrs or \$630 for 7 hrs, to be split by those attending. If more than 6 persons sign up, an additional boat is available.

July 19th, Saturday, Salmon and Trout– a one day 7 hr charter w/ Off Duty Charters out of Sheboygan. Captain Al has a grill on the boat to do brats, etc (weather permitting). The rate is \$500 for the charter to be split by the persons attending. Max number of persons is 6.

August –you are on your own.

Sept. Lake Erie Walleye and Perch, Smallies as collateral damage – a long weekend charter Friday and Saturday, arrive Thursday, Sept. 18th, fish Friday and Saturday, depart Sunday. It's about a 7 hr. drive to Port Clinton. This is with Captain Hooks (Captain Pete) out of Sandusky/Port Clinton. The rate for 3 nights lodging (Condos on a 25 acre lake) and 2 day fishing is \$295.00 per person. A fishing license for the US side is \$11.00 per day, if the best fishing is on the Canadian side, the license is \$22.00 per day, Captain Pete prefers the US side but he will go where the fish are. The daily limit on Walleye is 6, no possession limit, for Perch it is 30 daily, no possession limit

Oct . 18th, a Saturday. Usually a great time to fish the Barge out of Genoa. However the last trips have been plagued by excessive weeds floating down the river making fishing very difficult at best. This is still a possible, but if the weed report is not good, we may opt for hitting the local waters for a one day outing.

Nov. 8th a Saturday. One day outing to Lake Wisconsin for Walleye and Sauger. More detail as we get closer to the date.

		
		
	Duffy Kopf Pure Fishing Ambassador 506 Raymond Road Waunakee, WI 53597 likopf@tds.net 608-576-2700	
		
		

	
www.madisonboathouse.com	
5345 W River Road Waunakee, WI 53597 (608) 849-9200 boats@madisonboathouse.com	
Full service shop specializing in Mercury, Mercruiser, Suzuki and much more.	
Sales Service Repairs	
NEW Hobie Fishing Kayaks are available here at The Boathouse of Madison. Come on in today to see what a Hobie Kayak can do for you.	

An Interesting Side Trip

I was walking in the neighborhood while visiting my daughter in Butler, Wisconsin (a Milwaukee suburb) when I saw a sign on a small store front- Greg's Cottage and Fishing Emporium – but-sell-trade fishing tackle and outboards. I thought I should step in and check it out. The front of the store had a modest display of old fishing tackle, rods, and reels. Some of the old lures were new, in-the-box, with prices cheaper than you could buy replacements at current prices. Greg was busy and didn't have much time to talk because he also does income taxes and this was before April 15, but he said if you want to browse go in the back room. Well back room was plural, it was back rooms. One room was filled with antique motors including a 1915, 2.5 h.p., Evinrude that I don't think I could lift off the stand. Another room was about one-quarter filled with tackle boxes that Greg said he hadn't had time to go through. Greg is also an appraiser for antique fishing tackle. So if you are in the neighborhood and want to buy-sell-or trade some fishing tackle, look at antique motors, need an appraisal, or have nostalgia for old fishing tackle (or I guess get your taxes done) try a stop at Greg's Cottage. His address is 12602 W. Hampton Ave. in Butler, phone 262-783-1236 and 1-877-783-7350, or e-mail at gregscottage@yahoo.com.

Stan Nichols

RYAN & JOYCE-RYAN
FUNERAL HOME & CREMATION SERVICES
SINCE 1938
Madison - Verona - DeForest
Madison West
5701 Odana Road
608-274-1000
Madison East
2418 N. Sherman Avenue
608-249-8257
Personalized Burial & Cremation Services
Pre-Arrangements - Monuments
www.ryanfuneralservice.com

POYNETTE
IRON WORKS, INC.
The Quality Choice
KICK OUR COMPETITION'S
BUTTS... BY SPOILING
OUR CUSTOMERS ROTTEN.

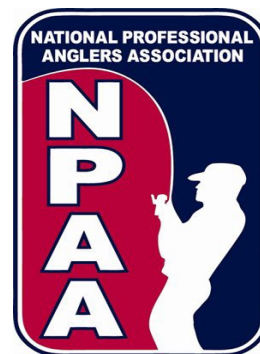
Full Color Copies (608) 257-8900
PRINTING & COPYING, LLC
131 West Wilshire Street, #900 Madison, WI 53703
One and Two Color Printing
Copying up to 36" x 48"
Large Format Posters
Posters, Banners, Wide Format for Trade Shows, displays,
parties, advertisements, etc.

evco
Plastic Injection Moulding
DeForest, WI 608-846-6000

WORLDWIDE
MARINE
UNDERWRITERS INC.
The Nation's
Leader in Boat
Insurance!
Get the facts,
Toll free **1-800-339-1235**
For a Quick Quote go to
www.worldwidemarineins.com

Tune Into
"Outdoor Horizons"
Saturdays at 8:00 AM
Radio WTDY 1670 AM
Hosts Gary Engberg,
Tony Puccio, Wally Banfi
Bringing you the best in Fishing, hunting and the outdoors

FINICKI AUTO ELECTRIC
Marine, ATV and PowerSports
Starters
Generators
Batteries
Deliveries
Alternators
Pump Motors
Installations
Pick-Ups
3127 E. Washington Ave. Service:
Madison, WI 53704 (608) 243-8730
Toll Free 1-866-243-8730



VETERANS OF FOREIGN WARS
OF THE UNITED STATES
V.F.W. Post 1318
133 Lakeside St.
Madison 53715
608-255-5955

Yahara Fishing Club



Pharo Marine Inc
Hwy 113 and River Road in Waunakee
849-5950

MERCURY
The Water Calls

Pontoons Deckboats
Mercury Mariner Force
Mercuriser OMC

"We excell in service"

HT ENTERPRISES, INC.

Duffy Kopf - Pro Staff
508 Raymond Road
Waunakee, WI 53597
608-848-7245 (H)
608-578-2700 (C)
jjkopf@tds.net

POLAR FLEECE
Cold Weather Clothing

Fishing Has No Boundaries

This is their 20th year of fishing fun on Lake Mendota, this year on July 12 & 13. Fishing Has No Boundaries needs volunteers to help with the annual event held at Governor Nelson State Park on Lake Mendota.

Boats, especially Pontoon boats that can accommodate wheel chairs, fishing guides, and fishing assistance are needed.

Volunteer: contact Nancy Loker 608-873-8085 or nloker@hotmail.com

The Madison Chapter of Fishing Has No Boundaries was started in July of 1995. Since that time the event has been held on the 2nd full weekend in July at Governor Nelson State Park. The park is located off county highway M on the southwest shore of beautiful Lake Mendota. 70 boats and pontoons and about 300 volunteers are available to provide a quality on the water fishing experience for anglers with disabilities. All food and beverages are provided for the 2 day event including a fish fry on Saturday night provided by Yahara Fishing Club. Entertainment is provided by a 7 piece band for dancing and toe tapping listening.



Quam's
Marine & Motor Sports

John Quam
Work: 608-873-3366
Fax: 608-873-6663
john@quamsmotorsports.com

1896 Barber Drive • Stoughton, WI 53589
www.quamsmotorsports.com

A Special Sponsor

This year again we received \$500 from

The Rod Regel Memorial Fund and

Mary Regel for both the Kids Ice Fishing

and the summer Kids Fishing day.

Thank You Mary!

Fin-tech
FISHING TACKLE

www.JIGFISH.COM

Live Bait Guide Service Tackle Fishing Info

D & S
BAIT, TACKLE, and ARCHERY

GENE & SANDY DELLINGER

Store: 608-241-4225
Fishing Hotline: 608-BIG FISH (608-244-3474)

dsbait.com
1411 NORTHPORT DRIVE
MADISON, WI 53704

NEBULUS
Emergency Flotation Device

A flotation device designed to save the lives of people on the ice riding an ATV or snowmobile. For information contact: Duffy Kopf 608-576-2700 jjkopf@tds.net

MAZANET MARINA

"OUR 40th YEAR ON LAKE MENDOTA"

SALES & SERVICE

Ranger NitroCraft
Evinrude STINGRAY

- * WINTER STORAGE
- * 300 WET & DRY SLIPS
- * GAS DOCK - BEER & ICE
- * BOAT RENTAL * LIVE BAIT

WWW.MAZANETMARINA.COM

249-9316
5320 BLUE BILL PARK DR

2014 Fishing Season Rule Summary by Duffy Kopf

Every season I am surprised by some people not knowing some of the rules. I put together a summary for the Madison area.

- You cannot move live fish away from the water.
- You cannot release live bait into the water.
- Your possession limit is twice the bag limit. If you have 51 panfish in your possession, you are in violation even if they are in your freezer.
- You cannot cull fish except in a permitted tournament.
- You cannot move fish from one body of water to another. This includes private ponds.
- You cannot throw fish onto the bank to die.
- You must remove all aquatic vegetation/animals from your boat before leaving the boat launch. You must also drain ALL water from your boat (livewells, bilge, motor, coolers, buckets). Put your catch on ice.
- You can transport purchased minnows as long as you will be returning to that same body of water or if you have not added any lake or river water or other fish into the container.
- Conservation wardens may enter private land at any time.

Size/Bag Limits

General Regulations – southern zone

- Largemouth and smallmouth bass – bag limit 5 – minimum size = 14"
- Catfish bag limit 10
- Muskie bag limit 1 – minimum size = 40"
- Pike bag limit 2 – minimum size = 26"
- Walleye/sauger bag limit 5 – minimum size = 15"

Special Regulations

Mendota

Largemouth or smallmouth bass – bag limit 1 – minimum size = 18"

Pike bag limit 1 – minimum size = 40"

Walleye/sauger bag limit 3 – minimum size = 18"

Monona/Waubesa/Wingra – Muskie bag limit 1 – minimum size = 45"

Wis. River *

Walleye/Sauger bag limit 3 – walleye 18", sauger 15"

Lake Wisconsin *

Walleye/Sauger bag limit 5 (15-20") and one 28"

*Duffy,

Thanks for putting this together it is a nice summary for the local waters. What you refer to as the Lake Wisconsin limits on walleye/sauger apply to most of the WI river watershed so it's the same for the Dells, Castle Rock, Petenwell and most of the WI river. I don't recall how far north that goes. The water below the Lake Wisconsin dam is different I gather that is what you mean by the WI river and its limits for walleye. For folks fishing below the Lake WI Dam at Sauk make sure you know the regs on catfish and some of the other species. The info you have provided is great but people need to have to be sure to check the actual regs for bodies of water they are fishing.

Here is the link the WI regs for 2014 <http://dnr.wi.gov/topic/fishing/regulations/>

Chris

Notes From the Prez

I'm going to whine a bit this month. I know – nobody wants to listen, it won't do me any good, and it won't change things. But here goes, anyway – just a little whining.

It's May, darn it! Why can't we get some decent weather! I got my boat out of storage last Saturday, the one decent day of the weekend. I got all my gear out of the basement and stowed in the boat, made a few little repairs and improvements in anticipation of the opening of the fishing season on May 3rd, and then rain for four days with a forecast for rain, rain, and more rain, not to mention cold weather, well into the first full week of May. What gives? I want to go fishing, and I don't particularly want to be cold and wet doing it!

There. I got that off my chest.

On the brighter side, the opening of the game fishing season is just a few days off, and I just got a senior license for only seven bucks. What a deal! But some better weather would be welcome. Like lots of YFC members, I'm still working, and while I can sometimes get out of the office on a nice day, lots of times I am stuck at my desk and I have to wait for the weekend. I would perhaps do well to heed my wife's frequent admonitions to retire and have lots more time to fish, golf, and work in my wood shop.

The Expo and a couple of enthusiastic speakers at our recent monthly meetings have helped to whet my fishing appetite. We have a fine presentation on musky fishing coming up at the May meeting, and then we begin a summer (June, July, and August) of our "on-the-water" meetings. My fishing gear has been dusted off, most of my reels have new line, my tackle box has been reorganized and restocked, and I am ready to get out on the lake. The Club-sponsored Kids' Fishing Day is coming up in early June, so put that event on your calendars, too. And don't forget, we have a new biggest fish competition with our fellow fishing enthusiasts from Beloit and Rockford, with southern Wisconsin bragging rights and a trophy at stake, to spur us on. It's tough being held back a bit by the weather, but I'll get there, we'll get there.

Gard

Parking changes at Tenney Park

Hi Tom and Stan,

As members of the Yahara Fishing Club, you may be interested in changes that are in the works for the Tenney Park parking lot. When we saw these plans, my husband and I noted that these changes will make the parking lot unusable for the many ice fishermen who enjoy the use of Lake Mendota in the wintertime. The change will remove 40% of the asphalt, eliminate 5 parking places and, most important to you, eliminate the possibility for people with trailers to turn around or park.

My husband wrote to our alder and asked for a 30-day comment period so that people who use the park would have a chance to weigh in. She has contacted Tom Maglio twice, but there has not yet been any response and it appears that they are going to begin construction soon.

If you disagree with these changes, it is imperative that you solicit your members and contact people in the Parks department such as Kevin Briski, superintendent of parks (<http://www.cityofmadison.com/parks/contact/telephoneList.cfm>), your alder (<https://www.cityofmadison.com/Council/councilMembers/alders.cfm>), and Mayor Soglin.

If you have any questions, feel free to give us a call. Our home number is 608-241-3635

Regards,

Pam and Michael Druhan

We just heard back from the city that they are proceeding with the changes to the lot without a public comment period. These changes will make the lot unusable for ice fishermen with trailers. It is such a shame that reduction of asphalt comes ahead of the citizenry's access to our recreational resources.



Duffy Kopf - Pro Staff
608-576-2700
ljkopf@tds.net



Yahara Fishing Club Membership Form

P.O. Box 3271 Madison, WI 53704

Please print

Name _____

If family/youth member, additional name(s) _____

Street _____

City _____

State _____ Zip _____ Phone _____ - _____ - _____

Email _____@_____

Annual dues, from January 1 to December 31:

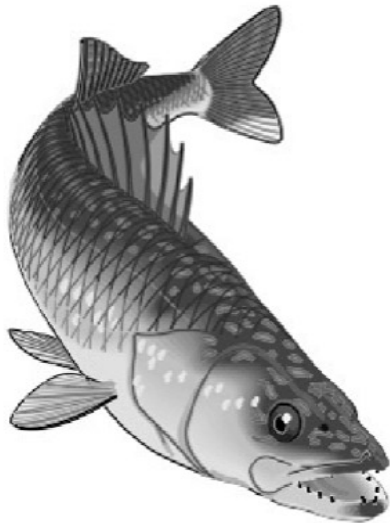
Individual\$25

Family.....\$35

Youth Member..... Free with other paid membership

*An Organization to Educate, Protect and Propagate the Interests of All Fishermen in the Yahara Basin Area
Including all of Madison's Lakes*

Yahara Fishing Club
P.O. Box 3271
Madison, WI 53704



Check out our web page at: www.yaharafishingclub.org

The next meeting is on Tuesday, May13th, at the Lakeside VFW Hall (John Nolen Rr. & Lakeside St.)
The Board Of Directors meet at 6:00 pm, The General Membership meeting starts at 7:00 pm.

Speaker: Wendall Webb

Calendar of Upcoming Events

May Events - See Page 2 for details

May 13th - Regular Club meeting. Musky Guide, Wendall Webb will discuss Operation Muskie (the program to take a vet fishing) and muskie fishing in general.
May 14th, Panfish outing .
May 15 – 18th, Walleye, lower Green Bay, a Thursday through Sunday. See Note page 2.
May 23 - 26th, Memorial weekend, and again on May 30 - June 2nd. Smallmouth, Bay De Noc.
See note page 2.

June Events

June 10th - On the water meeting.
June 22th, a Sunday. Salmon and Trout, a charter out of Port Washington with Captain John Iverson.

The Yahara Fishing Club's doors are open to **EVERYONE**, so invite a friend to the meeting!

President - Gard Strother258-8555	Director - Don Gostomski 249-8250	Director - Jim Kloth.....635-0116
Vice Pres. - Phil James212-2506	Director - Paul Zoch 241-5443	Director - Larry Reed221-0362
Treas - Colleen Marsden 630-408-9646	Director - Tom Wilke.....834-9554	Director - Jesse Tougas ...873-3151
Secretary- Randy Winkleman 358-4885		