

Y
E
A
R
B
O
O
K



Yahara Fisherman's Club

PUBLISHED ON THE OCCASION OF THEIR
7th ANNUAL PERCHAREE

February 21-22, 1959

ON WORLD FAMOUS LAKE MENDOTA WHERE FISHING IS FABULOUS

MADISON ♦ WISCONSIN

Everything for the Boater

ALUMA CRAFT BOATS AND CANOES

GLASS MAGIC BOATS — GRUMMAN CANOES

EVINRUDE MOTORS — ALUMA CRAFT TRAILERS

PETTITS MARINE PAINT — MARINE HARDWARE

COMPLETE CAMPING EQUIPMENT

THOMPSON CLINKER BUILT BOATS

All for fun—fun for all!



We have a complete line of Ice Fishing Equipment
Open Mon. & Fri. Night till 9

**EVERYTHING FOR
THE FISHERMAN**

If it's made for fishing, we've got it . . . tackle, boats, trailers, and those new quiet Whispering Power Evinrudes. Come in today!



Evinrude

Berg-Pearson
SPORTING GOODS
2123 Atwood Ave.
CHerry 4-4744

Message from the President

Fellow Sportsmen,

It is very heart warming to see the vast strides that has become a reality in the past few years by local sportsmen's clubs. Only a short time ago conservation was taken for granted, and many thought the commission or the legislators would do as they liked.



Today with the vast number of clubs representing towns, villages and cities with countless thousands of members the entire picture has changed.

Legislators, conservation personnel, commissioners and many others depend upon you, the true sportsman for today's answers.

Just as the Yahara Fisherman's Club depends upon its many members to give unselfishly of their time in physical effort and money to create better conditions for fellow sportsmen.

In many instances the very existence of the club has served as a deterrent to any force that may have willingly or unwillingly worked against the best interest of conservation in the Yahara basin.

The Yahara Club is proud of the part it has played in the final removal of sewage affluent from its lower lakes.

Also proud of its slogan "the watchdog of our Madison Lakes."

The Club hopes to maintain all the improvements already accomplished, to develop new programs and ideas to better fishing and boating in the Yahara basin.

Without the fine cooperation of governmental agencies, as well as other public officials and civic minded persons our aims could never have materialized. I'm sure that those who have given us this aid, realize our appreciation.

Personally I want to thank each and every one who have contributed to the success of the Yahara Fisherman's Club this past year.

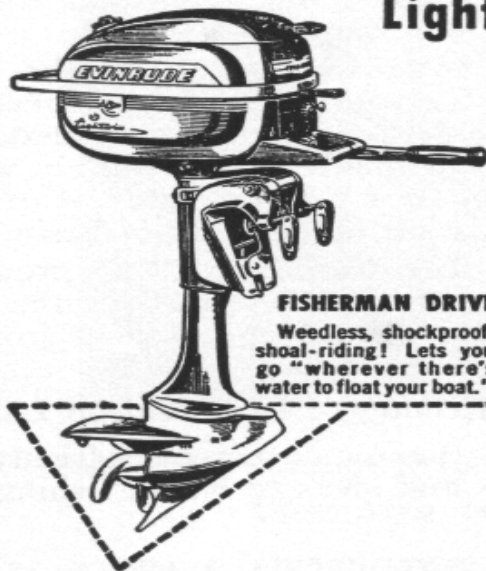
I know that we will continue to uphold our club's motto of which we are justly proud, "The protection and promotion of fisherman's rights and privileges" for years to come.

KEITH E. ACKLEY

take your fun along...



take a
**Lightwin! Stows Anywhere!
Goes Anywhere!**



FISHERMAN DRIVE
Weedless, shockproof,
shoal-riding! Lets you
go "wherever there's
water to float your boat."

You're set for fun wherever you go . . . when you take along this ablest, quietest, most versatile of light motors. *Stows anywhere*—so compact it snugs in a tight corner of your luggage compartment. Weighs only 32 pounds. *Goes anywhere!* Lightwin's famed Fisherman Drive takes you "way back in" where fishing's best . . . through weeds and snags and shallows where other motors cannot go. 3 HP—O.B.C. certified at 4000 RPM. Perfect for use on rental boats and for family use. Drop in for a demonstration!

Evinrude
quiet OUTBOARD
MOTORS

Officers and Directors

Keith Ackley, Pres.
Elmer Tessman, Vice Pres.
Harold Fetzner, Secy.
Jim Collins, Treas.

Directors

Stan Allen
Ray Amble
Bob Arneson
Rod Borchardt
Ken Christensen
Lonnie Chute
Oscar Fass
John Hoffer
Wes LeFebvre

Joe Mahala
Arne Morris
Gus Olson
Carl Pauls
Charles Peckham
Ivel Reithmeyer
Herb Rossow
Mel VonEschen
George Young

Advisors

Al Koppenhaver
Frank Dresen
Herman Kerl
Hobart Snyder

The members of The Yahara Fisherman's Club take this opportunity to express their appreciation to the many individuals, business firms, civic groups, and governmental agencies for their help and cooperation in the club's many varied projects. And, more specifically, to the Dane County Board, Dane County traffic Dept., officials of the Towns of Westport and Madison, City of Madison Common Council and officials, Jim Marshall of the Madison Parks Dept., the Madison Police Dept., Al Koppenhaver and the Wisconsin Conservation Dept., the University of Wisconsin Zoology Dept., the Wisconsin State Journal, the Capital Times, the East Side News, the Milwaukee Journal, the Milwaukee Sentinel, WISC-TV, WKOW-TV, WMTV, all local Radio Stations, Ken Christensen photos and many more.

KNUTE SORENSON MEMORIAL ACHIEVEMENT AWARD

In July of 1956 the Yahara Fisherman's Club lost one of its most tireless and imaginative workers in a tragic plane crash. Knute Sorenson had done much for the club, particularly in the fields of membership, promotion and advertising.

At our 1956 annual meeting a proposal was made to establish an annual award in memory of Knute Sorenson. The award is a five year club membership and recognition as the outstanding clubman or clubwoman of the year. The award will be perpetuated annually by Dr. Schneiders.

The 1957 award winner was Charles A. Peckham. The 1958 award winner was Lonnie J. Chute. It is hoped that each year will find an increasing number of club members eligible for consideration.

215
State St.

WARDS 

ALpine
6-7741

MONTGOMERY WARD

WARDS ANNUAL PAY-IN MAY

LAY - AWAY SALE Feb. 4th to March 31st

Lowest Prices of the Season

Sea King "25"
sale 380.00

Reg. \$422.00. Deluxe
25-HP sports model.
Has features of \$465
motors. Ideal for
skiing.

Sea King "12"
sale 249.00

Reg. \$279. Popular
12-HP. Compares
with \$325 motors.
Speeds 2 to 22 mph.

Sea King "5"
sale 139.00

Reg. \$156. Equals
motors over \$185.
5-HP . . . popular for
fishing. Speeds 1½-
12.

WATCH FOR WARD'S BOAT SHOW!

Starting Sunday, February 15

10 Models of Motors — 15 Models of Boats
And Complete Line of Accessories All on Display

Mickies Dairy Bar

1511 Monroe St. — Across from Field House

DELICATESSEN — RESTAURANT — COLD BEER AND POP

PICNIC SUPPLIES — COMPLETE DINNERS

MAGAZINES AND CIGAR COUNTER

Open 7 Days — 6:30 A.M. to 12 P.M.

Stop in and see us, we are charter members of the club

VAN REESE NORM BASS

Proprietors

Madison's Natural Assets

Madison has enjoyed one of the greatest natural assets that any city and its residents could be fortunate enough to have in the form of the lakes in our community. The recreational possibilities afforded to our residents by them make this area one of the real pleasure spots in which to live and removes the need for seeking these same recreational opportunities in distant places. Equally they bring to the Madison community many people from a number of states which in turn is of benefit to the economic picture of the area. As we are fortunate enough to have these assets, equally we have been fortunate in the attitude of the citizens of the community toward the preservation of the beauty and desirability of these great natural resources. There has been a continuing watchfulness on the part of citizens and citizen organizations in making sure that the lakes are maintained in as good condition as is reasonably possible, and this constructive attitude by people has been of great assistance in enforcing and insuring use of the lakes consistent with the best interests of all concerned.



I believe you will find that the City government and official city action equally has been directed with this same goal in mind. Programs carried on by the City have been

developed with the policy of trying to maintain the integrity of our lakes. The Park Commission, in the development of its park system, has utilized as much as possible this water resource. We always have the concern of trying to develop public access and public use of the shoreline, and we have been fairly successful in this respect. Public ownership now on our two lakes can be improved by obtaining additional lands on the westerly shores of Lake Mendota where public access is now so very limited. Elsewhere the Park Department either has or will see to the development of lands and beaches it controls. The Park Commission and Common Council has been sympathetic to this general attitude, and, I am confident, will continue to be so.

A major project which has been needed for a number of years has been the reconstruction and improvement of the Tenney Park Lock and Dam. This project was let for bid during this winter, and the new facilities will both be enlarged and immensely improved. The work is scheduled for completion in late spring, and the result will be one of approval from the users I am confident.

A matter which must be watched carefully is lakes safety with the vastly increasing use of the lakes, not only by boaters, but by swimmers, divers, fishermen, and the many other types of users, just as increasing use of our highways has given rise to concern about traffic safety and more stringent traffic controls. Consequently, I appointed a citizens committee a few months ago with the thought in mind that the lakes safety regulations should be re-examined and recommendations made where ordinances or regulations governing the use of the lakes are either inadequate or should be amended. This committee has representation on it from the various types of users of the lakes, and I am hopeful that the committee will be able to submit recom-

WING'S INN CAFE and BAR

3052 E. Washington Avenue

**A STEAK DINNER FOR EVERY
TASTE AND SIZE**

**CHICKEN That Is DIFFERENT
2 PRIVATE ROOMS FOR PARTIES**

CHerry 4-9917

MADISON

FITCH - LAWRENCE Funeral Home

ED. LAWRENCE, Pres.

S. D. SAN FILLIPPO, Sec.

626 UNIVERSITY AVE.

Phone AL 6-8848

mendations in time for the 1959 summer recreational season. Actually a continuing examination of these types of regulations is in order so that we can keep current our thinking about use and safety of the Madison lakes.

There are many other items that might be discussed with regard to this natural resource of our community, such as the development of our swimming beaches, ice rinks and other recreational possibilities. We hope that persons and organizations interested in any or all of these matters will continue to feel free to call to our attention matters on which improvement might be sought.

IVAN A. NESTINGEN
Mayor

Casey and O'Brien

Wisconsin's Largest T-V and Appliance Center

2044-46 Atwood Ave.

CHerry 4-6281

Mayflies
Grubs

Golden Shiners

Minnows
Worms

Ackley's Sport Shop

Complete Line of Live Bait & Fishing Equipment
Operator Wis. Licensed Guide

Stop For Information on Where They Are Biting

LOCATED ON HIGHWAYS 30 and 151

3062 E. WASHINGTON

TELE. CH 4-1958

Theo. Bakken & Sons

MASON CONTRACTORS

Quality Work Since 1929

Fireplaces, Veneer, Brick, Block, Stone

CE 3-8495 or CE 3-5793

Elsie Kleins

COFFEE SHOP

FOOD AT IT'S BEST

We Serve \$1.00 Dinner

Home Made Pies & Rolls

2802 E. Johnson Street

Phone CHerry 4-9708

COMPLIMENTS

"WISCO 99" FUEL OIL, GASOLINES

AND MOTOR BOAT OILS

DISTRIBUTED BY

DON H. GALLAGHER, President

2605 W. Broadway

24 Hour Service

AC 2-3720

THE
Ultra-Modern Home
NEEDS A

COMMUN-A-HOOD

RUSSELL CARPENTER

Box 29, Rt. 4

Madison, Wis. — CH 4-3233

FEATURING:

- Range Hood
- Radio
- Intercom + 6 speakers
- Lumaline Light

A Proclamation

Madison is known as the perch capital of the world, and has rightfully earned the title because of its fine lakes that abound with perch, as well as many other varieties of pan and game fish; and each year thousands of local residents and tourists catch the legal limit daily;

Therefore, I, Ivan A. Nestingen, Mayor of Madison, do hereby proclaim February 21 and 22, 1959, as

PERCHAREE DAYS

in connection with the festival to be held on Lake Mendota this year sponsored by the Yahara Fisherman's Club; and I urge all citizens, young and old alike, to join in the activities of the festival and take advantage of the good fishing in our lakes and help make the event a success.

IVAN A. NESTINGEN, Mayor
City of Madison, Wis.

Signed this 26th day of
January, 1959, at City Hall.

Yours . . . Truly for fun . . .

ALUMA *Craft*

• Special aluminum alloy gives Aluma Craft boats tremendous strength without cumbersome weight. The light, sturdy hulls can't rust, rot or dry out and leak . . . never need expensive upkeep. Scientific design means perfect performance with either motor or oars.

STRENGTH without weight . . . **FUN** without work

See the new models at
BERG-PEARSON SPORTING GOODS—2133 Atwood Ave.

LARKIN'S

FOR AUTO PARTS —

HARDWARE — FISHING TACKLE

1960 ATWOOD AVE.

SCENK'S CORNERS

SERVING TASTY FOODS
DINNER, LUNCH OR AFTER-SHOW SNACK

We Are Always Here to Serve Day or Night

CH 9-1191

GOLDEN OX RESTAURANT

3160 E. Washington

The RUSSELL MARINA

At North End Lake Mendota

SCOTT OUTBOARD MOTORS

Fibre Glass — Plywood — Aluminum and Lapstrake Boats
Complete Marine Service

Jct. Hwy. 113 & Co. Trunk M

CHerry 4-7231

Roy Willgrubs, Mgr.

WRINGER ROLLS

DRAIN & FILL HOSES

Rod's Appliance Repair Parts

HOME LAUNDRY EQUIPMENT

Parts — Accessories and Supplies

House of 10,000 Parts — DIAL CH 4-0778

1017 N. SHERMAN AVE.

MADISON 4, WIS.

Dryer Venting Materials

Land For Improved Fishing Opportunity

By L. P. Voight, Director
Wisconsin Conservation Department

It would be logical to think that a state with abundant waters such as Wisconsin possesses would be assured of everlasting good fishing. Yet most veteran fishermen know that more than water is needed. To preserve our valuable public heritage in fishery resources, we also need land. Land for access to water, land for springhead and stream improvement, land to protect and preserve marsh-spawning grounds.

The leaders of your PERCHAREE program this year are aware of this need. I understand profits will be offered to the Conservation Department to help purchase the Upper Mud Lake marsh-spawning grounds which lie between lakes Monona and Waubesa. This is one of the last two northern pike spawning areas producing fish for Lake Monona. If it is not acquired for preservation soon, the encroachment of filling for private development may destroy it for all time. It is estimated that 960 acres of this marsh will cost about \$40,000 and the project was approved by the Conservation Commission last November.

In the last five months the Conservation Commission approved 30 fishery land acquisition projects totaling almost 48,000 acres at a cost of over \$270,000. Many of these are joint projects with public hunting grounds being purchased with game funds. A large number will include access to lakes and streams not now open to the public. Every bit of assistance from local units of government and conservation clubs will help, for this is only part of a larger program which will take more than 20 years to complete.

As of last July, the Fish Management Division still had over 40,000 acres of land to buy on established projects and the cost of those lands was estimated at \$1.4 million. Then at the July Conservation Commission meeting a total of 83 more fishery projects costing another \$4.3 million were given general approval as a long-range program. There were 32 of these with top priority in about 20 counties, but the emphasis was placed on the south and southeast where the need was greatest. The 30 specific projects recently approved by the Conservation Commission were part of this new program.

Land acquisition is only one phase of the Conservation Department's over-all fish management work to improve the public fishing opportunity. Most fishermen will agree that spawning grounds, springs, choice trout streams and access to public waters should have priority for their fishing license funds. By adding to this good water habitat management, we can be assured of good fishing for the future.



SEE MADISON'S MOST COMPLETE
SPORTING GOODS DEPARTMENT

1101 E. Washington Ave. — Free Parking

STIEVE'S FRIENDLY SERVICE

MOBIL PRODUCTS
MARINE LUBRICANTS

2951 E. Wash. Ave.

CH 4-9913

GOOD LUCK TO ALL FISHERMEN

AVENUE BEVERAGE STORE

3063 E. Washington Ave.

CH 4-9914

JOHN BOSSART, Prop.

Open Seven Day a Week from 8 A.M. to 9 P.M.

"The Watch Dog"

Sportsmen clubs all over the state are an asset with untold value to the Conservation Department and without exception to the local conservation warden.

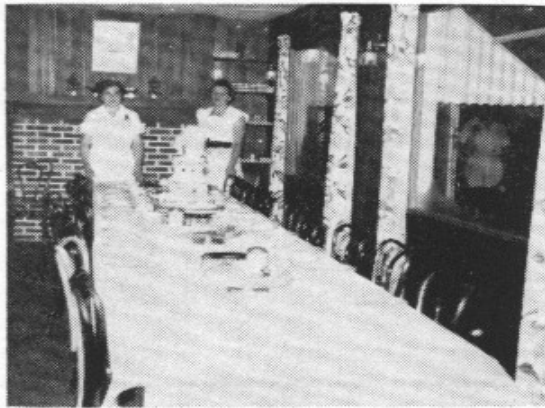
They are the "Watch dog," and because of their large memberships and area they cover, give initial information to the Conservation Department.

The Yahara Fisherman's Club is like most sportsmen clubs the world over, it is built around a core of solid conservationists who spend many hours of their time and are expected by the rest of the membership to carry the load, do the work and execute a progressive conservation program.

This club has come a long way—boat houses, launching sites, piers and other boating facilities are some of their accomplishments. They have been a great help to me on many problems, given of their time and energy to help when ever help was needed.

It is safe to assume without "The Watch dogs" and their help the work load of wardens would be greatly increased. Thank you Yahara fishermen for your help and support.

Al Koppenhaver, Conservation Warden



HOOKER'S RESORT

POYNETTE, WIS.

**Located on the banks of the Wisconsin River, between
Poynette and Portage, and Junction J & V**

**This is one of the historical spots voted for State Capitol
Lost by one vote**

FAMOUS FOR CHICKEN DINNER

NEW CARS

USED CARS

**Buy Your Ford
From a Fisherman**

See BOB KORTSCH or BOB KARTMAN

CH 9-1117

CE 3-7840

KAYSER MOTORS INC.

NEW TRUCKS

USED TRUCKS

DECORATING — COLOR BAR — PAPERHANGING

SCHMELZER PAINT CO.

PAINTS — WALLPAPER — GLASS — SUPPLIES

2436 University Ave.

Phone CEdar 8-1722

Madison 5, Wisconsin

CONGRATULATIONS

HARDER PAPER & SUPPLY CO.

Madison, Wis.

ALWAYS TRY HARDER

Winter 1958-1959 -- Lake Mendota

Hydrobiology Laboratory Staff

Maybe you've noticed some changes on Lake Mendota this winter season of 1958-1959. Think now its been the coldest winter in many a moon, some 39 years to be exact, resulting in over 22 inches of ice and countless testimonials of fishermen as to the real extent of the weather on hands, face, feet and so forth. The snow cover on the ice has been deeper this year than any since 1951, often making walking difficult. Maybe you've noticed when you chop a fishing hole the water rises above the level of the ice. This is because the weight of the snow is forcing the "floating" ice down deeper into the water.

This year's creel census shows that the perch fishing on Lake Mendota has been good—not only good, but very good! How about the status of the population? Just how "healthy" is it? How have four years of liberalized regulations affected the perch in Lake Mendota? Although we can't answer all the questions as yet, we still can put forward the following observations. The perch population appears to be in a very healthy condition, and hatches of perch have been normal since the new regulations have been in effect. In fact, the hatch of 1957 was tremendous, as is shown by the large numbers of smaller fish being caught this winter. Perch this year appear to be biting much better than was the case for the past two winters, probably due to some environmental or food factor, rather than to any sharp difference in supply of available fish.

A perch, like all other living animals, is continually adjusting his life to fit his environment. Thus, if most of the food is on the bottom of the lake, that is where the fish feed. They adjust their movements and feeding habits according to water temperatures, oxygen conditions, light values, currents, and many other things, some of which we may not even yet know. Thus fishery scientists also brave the cold along with the fishermen in order to learn more about the perch.

Last winter Lake Lab research crews operating echo sounders on Lake Mendota found that many schools of perch were swimming at 30 to 50 feet depths over water that was 60 to 80 feet deep, instead of on the bottom. So far this year the perch appear to be staying closer to the bottom. Continuous echo sounding records over a 24-hour period have shown that perch have different movement patterns during the day as compared to the night. These and other findings will allow fishery scientists to understand better the many inter-actions which are affecting the perch population.

The environment, besides affecting the lives of the perch, also affects the hatch of young fish in the spring. Thus, although the hatch is usually "normal", on occasion a very large hatch occurs and also, infrequently, a very small one. The reasons for this are not completely understood, but probably are a result of weather and food conditions during and after the spring spawning. Thus the success of the perch hatch in any one year is influenced by natural events, and not by the numbers of spawning fish.

All evidence so far strongly indicates that the increased harvest of perch in Lake Mendota is healthy and beneficial not only to the perch population, but also to the recreation of Madisonland's sportsmen.

Yahara Fisherman's Club

1959

Miss Percharee Queen Pageant



Judy Ann Fetzer was named Queen of the Yahara Fisherman's Percharee Thursday, January 29, as she outpointed 8 rivals to get the vote of a panel of four judges. Miss Fetzer and her court will reign at our Percharee beginning on February 21 on Lake Mendota.

Pictured left to right: Marcia Falck, Betty Poppa, Mary Jane Warnecke (third), Karen M. Anderson (second), director and producer of pageant Charles A. Peckham, Judy Ann Fetzer (our Queen), Alice Wagner, Mary Lou Midthun (third), Carol Neuheisel, and Barbara Snyder.

STAFF

Director & Producer
Charles A. Peckham

Musical Score
Helene Rethke

Wardrobe & Coordinator
Mrs. J. O. Reeb

Art Director
Karla Bast

JUDGES

Miss Louise Marston
Wisconsin State Journal

Mr. Jerry Bassett
WISC Radio & Television

Joseph "Roundy" Coughlin
Wisconsin State Journal

Stan Bran - WMTV
"Outdoors Calling"

The Board of Directors and Members of the Yahara Fisherman's Club Wish to Acknowledge Your Participation and Cooperation

Madison Community Center
Director Kurt Bliss and Staff

Berg - Pearson
2123 Atwood Avenue

The Hub
22 W. Mifflin

Schwartz Incorporated
440 State Street

Goodman's Jewelers
220 State Street

J. J. Smith Jewelers
115 State Street

Lavin's Floral Shop
4511 Monona Avenue

Army Surplus, L. V. Vivier,
Prop.
422 State Street

Schilling's Import Shop
2145 University Avenue

Wolff, Kubly, & Hirsig
Madison, Wisconsin

Wm. Busch Beauty Salon
640 State Street

The Church Mart
514 State Street

Sherman Park Beauty Shop
1710 Hooker Avenue

Reierson Studios
116 E. Main

Beecher's
430 State Street

Nedrebo's
524 State Street

WISC Radio & Television
Jerry Bassett & Staff

WKOW Television
Clark Hogan

WMTV Television
Stan Bran - Show
Jerry Harper
Bill Lister

Madison Newspapers, Inc.
115 S. Carroll Street

Beaux Arts Enterprises

In addition to the group of businessmen listed above, I wish to thank everyone of the contestants who not only took part in the pageant, but who also unselfishly gave of their time and talents in order to make films and appearances on numerous television programs.

To the members of my staff, I say that without your help and many hours of preparation the pageant could not have been a reality. To the panel of Judges, I must say that your fine talents and fair and impartial judging has given us a lovely Queen and her Court.

YOU are the type of persons that have caused MADISON, WISCONSIN, not only to be called the best city in the world in which to live, but have made it to be that way. We of the YAHARA FISHERMAN'S CLUB salute you.

Charles A. Peckham
Director of Productions, Queen Pageant

COVER

Pictured on the cover are Judy Ann Fetzer on the left, our Queen and Karen Anderson on the right, 1st runner-up in the Percharee Queen Pageant. They are shown interviewing two fishermen from the South Pole, Suda (Mrs.) and Pola (Mr.) Penguin.



Club President Keith Ackley shown with runner-up Karen Anderson and Queen Judy Fetzer to whom he has just awarded the trophies.

Sporting Goods — Hunting & Fishing Equipment
WHOLESALE

MAZANET DISTRIBUTORS INC.
2949 University Ave. CH 3-8083

FRANZ HAAS'

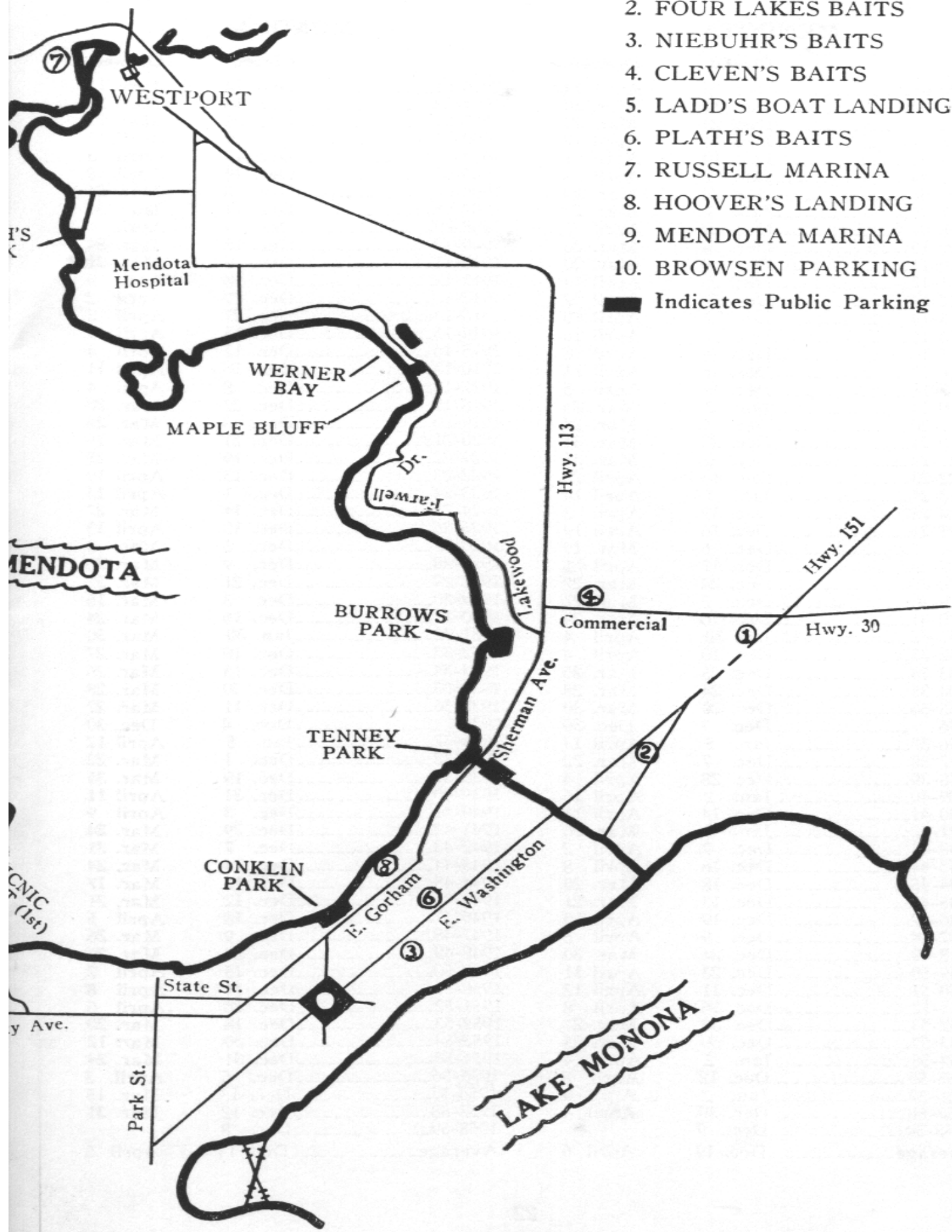
STANDARD SERVICE

Vern Wagner, Mgr.

ALpine 5-0511

318 S. Park Street

1. ACKLEY'S BAIT
 2. FOUR LAKES BAIT
 3. NIEBUHR'S BAIT
 4. CLEVEN'S BAIT
 5. LADD'S BOAT LANDING
 6. PLATH'S BAIT
 7. RUSSELL MARINA
 8. HOOVER'S LANDING
 9. MENDOTA MARINA
 10. BROWSEN PARKING
- Indicates Public Parking



OPENING-CLOSING HISTORY—MADISON LAKES

MENDOTA

	Closed	Opened
1900-01	Dec. 25	April 11
1901-02	Dec. 15	Mar. 30
1902-03	Dec. 25	Mar. 24
1903-04	Dec. 13	April 17
1904-05	Dec. 14	April 1
1905-06	Jan. 1	April 8
1906-07	Dec. 20	Mar. 24
1907-08	Jan. 1	Mar. 24
1908-09	Dec. 22	April 7
1909-10	Dec. 18	Mar. 26
1910-11	Dec. 9	Mar. 20
1911-12	Dec. 28	April 14
1912-13	Dec. 24	April 2
1913-14	Jan. 12	April 10
1914-15	Dec. 16	April 10
1915-16	Dec. 28	April 8
1916-17	Dec. 16	April 11
1917-18	Dec. 17	April 5
1918-19	Jan. 3	Mar. 26
1919-20	Dec. 9	Mar. 28
1920-21	Dec. 25	Mar. 31
1921-22	Dec. 25	Mar. 31
1922-23	Dec. 16	April 20
1923-24	Jan. 1	April 14
1924-25	Dec. 19	April 3
1925-26	Dec. 16	April 19
1926-27	Dec. 6	Mar. 19
1927-28	Dec. 17	April 1
1928-29	Dec. 28	Mar. 27
1929-30	Dec. 3	Mar. 27
1930-31	Dec. 16	Mar. 24
1931-32	Jan. 30	April 4
1932-33	Dec. 10	April 4
1933-34	Dec. 25	Mar. 26
1934-35	Dec. 24	Mar. 28
1935-36	Dec. 20	Mar. 30
1936	Dec. 7	Dec. 30
1936-37	Jan. 5	April 13
1937-38	Dec. 7	Mar. 22
1938-39	Dec. 28	April 4
1939-40	Jan. 2	April 16
1940-41	Dec. 14	April 11
1941-42	Jan. 3	Mar. 26
1942-43	Dec. 7	April 2
1943-44	Dec. 16	April 8
1944-45	Dec. 18	Mar. 20
1945-46	Dec. 13	Mar. 21
1946-47	Dec. 19	April 10
1947-48	Dec. 9	April 3
1948-49	Dec. 24	Mar. 30
1949-50	Dec. 23	April 11
1950-51	Dec. 11	April 12
1951-52	Dec. 16	April 8
1952-53	Dec. 30	Mar. 21
1953-54	Dec. 30	Mar. 25
1954-55	Jan. 2	April 4
1955-56	Dec. 12	April 8
1956-57	Jan. 2	April 4
1957-58	Dec. 30	April 4
1958-59	Dec. 9	
Average	Dec. 19	April 6

MONONA

	Closed	Opened
1900-01	Dec. 14	April 11
1901-02	Dec. 14	Mar. 27
1902-03	Dec. 26	Mar. 21
1903-04	Nov. 27	April 15
1904-05	Dec. 13	April 3
1905-06	Dec. 14	April 8
1906-07	Dec. 8	Mar. 24
1907-08	Dec. 11	Mar. 26
1908-09	Dec. 9	April 6
1909-10	Dec. 18	Mar. 24
1910-11	Dec. 8	Mar. 21
1911-12	Dec. 18	April 9
1912-13	Dec. 19	April 2
1913-14	Dec. 27	April 2
1914-15	Dec. 15	April 9
1915-16	Dec. 15	April 4
1916-17	Dec. 16	April 11
1917-18	Dec. 8	April 4
1918-19	Dec. 27	Mar. 20
1919-20	Dec. 3	Mar. 28
1920-21	Dec. 21	Mar. 16
1921-22	Dec. 19	Mar. 25
1922-23	Dec. 13	April 19
1923-24	Dec. 1	April 13
1924-25	Dec. 14	Mar. 27
1925-26	Dec. 10	April 15
1926-27	Dec. 5	Mar. 5
1927-28	Dec. 9	Mar. 26
1928-29	Dec. 21	Mar. 27
1929-30	Dec. 3	Mar. 16
1930-31	Dec. 16	Mar. 24
1931-32	Jan. 30	Mar. 30
1932-33	Dec. 10	Mar. 27
1933-34	Dec. 13	Mar. 26
1934-35	Dec. 20	Mar. 28
1935-36	Dec. 11	Mar. 27
1936	Dec. 4	Dec. 30
1936-37	Jan. 5	April 12
1937-38	Dec. 1	Mar. 22
1938-39	Dec. 19	Mar. 31
1939-40	Dec. 31	April 11
1940-41	Dec. 3	April 9
1941-42	Dec. 29	Mar. 24
1942-43	Dec. 7	Mar. 31
1943-44	Dec. 14	Mar. 24
1944-45	Dec. 18	Mar. 17
1945-46	Dec. 12	Mar. 21
1946-47	Dec. 18	April 5
1947-48	Dec. 9	Mar. 26
1948-49	Dec. 24	Mar. 26
1949-50	Dec. 15	April 7
1950-51	Dec. 11	April 8
1951-52	Dec. 16	April 6
1952-53	Dec. 18	Mar. 20
1953-54	Dec. 30	Mar. 12
1954-55	Dec. 31	Mar. 24
1955-56	Dec. 6	April 3
1956-57	Dec. 13	Mar. 15
1957-58	Dec. 12	Mar. 31
1958-59	Dec. 8	
Average	Dec. 14	April 5

Yahara Fisherman's Club 1958 All Girl Softball Team



First row—(left to right) Squirt Klein (CAT.), Nancy LaMay (SS), Penny Ploc (4RF), Blanche Gess (CF).

Second row—(left to right) July Nelson (RF), Carol Tourdot (PIT.), Rusty Reese (PIT.), Clara Gandolph (LF), Elaine Burns (4LF), Maxine Nelson (3B).

Third row—(left to right) Earl "Toby" Leigh (Mgr.), Char Quinlan (PIT.), Rosie Brausen (1B), Judy Fetzer (PIT.), June Powers (CAT.), Lois Lawrence (UIF), Rilla Belle Leigh (2B), Phil Gandolph (Asst. Mgr.).

Absent when picture was taken were: Nancy Nichols (CAT.) and Barb Farr (4CF).

Charlotte Quinlan, who hit .500 for the 1958 season, was awarded the batting championship trophy by Mgr. Earl Leigh. Blanche Gess was presented the most improved player trophy. Nancy LaMay was awarded the most valuable player award and Maxine Nelson was awarded the rookie of the year trophy.

The team won 25 out of 28 games during 1958. The season was climaxed by the winning of the championship trophies at Roscoe, Illinois; Lake Mills, Wis., and the Madison, Wis. Invitational Tournaments. The pitching staff and records were Char Quinlan 5 and 0, Carol Pierce 5 and 0, Rusty Reese 2 and 0, Judy Fetzer 2 and 0, and Carol Tourdot 11 and 3.

At the Madison Tournament, all-star teams were selected from the participating teams by the umpires and the official scorer. Members of the Yahara girl's team which won berths on 1st team were: Rosie Brausen—1B, Nancy LaMay—SS, Blanche Gess—CF, Clara Gandolph—LF, and Carol Tourdot—PIT. Three of the Yahara girls were named to the second all-star team, namely, Rilla Belle Leigh—2B, Maxine Nelson—3B, and Nancy Nichols CAT.

At the Lake Mills tourney Nancy LaMay and Rooty Leigh were named most valuable players by the tournament committee. Blanche Gess received the same honors at the Roscoe, Illinois tourney.

OSSIE

JOE

FASS BROS.
MASONRY & CONCRETE OF ALL TYPES

DIAL ALpine 5-9727

**"BOB" COOPER
GLASS COMPANY**

755 E. WASHINGTON AVE.

MADISON, WIS.

HANSON TAVERN

At Westport on the Yahara

Boat Landing

BAIT — TACKLE — LUNCHES

CHerry 4-9858

BANKING IS EASY AT SECURITY

DRIVE-IN BANKING

WALK-IN BANKING

BANKING-BY-MAIL

SECURITY STATE BANK

ON MADISON'S EAST SIDE

INSURED DEPOSITS

MEMBER F.D.I.C.

**PRIZE WINNERS — 5th Annual Ice Percharee
February 15th and 16th, 1958**

GRAND PRIZES

- 1st Prize**—14 Ft. Aluma Craft Boat and 5 hp. Evinrude Motor
Lloyd Rice
2422 South 75th Street
West Allis, Wis.
- 2nd Prize**—Boat Trailer
Austin Boyle
2128 Commonwealth Ave.
Madison, Wis.
- Consolation Prize**—Seator-Heater
Gerald Barfknecht
2417 Dahle St.
Madison, Wis.

BEST CATCH

February 15

Catch of 25

- 1st—Dale Gritzmacker
2nd—L. H. McLaughlin
3rd—Edwin Wealti

Catch of 20

- 1st—Bert Bailey
2nd—No Entry
3rd—No Entry

Catch of 15

- 1st—Ken Doker
2nd—Vincent Colletti
3rd—Joe Fix

Catch of 10

- 1st—Stan Allen
2nd—Herbert Holsee
3rd—Floyd Hoefert

Best Outfitted

Norman Sanders

One From Farthest Distance Away

Roy Schumacher

Oldest Contestant

William Junge

Youngest

Charles Cychose

February 16

Catch of 25

- 1st—Elroy Beckman
2nd—G. Stegmann
3rd—Dale Gitzmacher

Catch of 20

- 1st—Mr. Stenzel
2nd—Bob Erb
3rd—Jean Cich

Catch of 15

- 1st—Vincent Colletti
2nd—Tom Zingg
3rd—No Entry

Catch of 10

- 1st—Herbert Helser
2nd—John Trawitzke
3rd—No Entry

Best Outfitted

Dick Wagner

One From Farthest Distance Away

Jim Hacker

Oldest Contestant

Jesse Griffith

Youngest Contestant

Chuck Simpson

Birthday on or about February 16, 1958

Pat Connery

MISCELLANEOUS

Harvey P. Terry
Foster V. Hine
Lorraine Brussow
Phillip Meyers
Frank Garger—Springfield
George Staug
A. V. Reinking—Columbus
Bud Ellingson
Norman J. Nordgren—Wawautosa
S. H. Martin
Harold Engelberger
Edwin E. Dehring, Beloit
Orchard Oakey
Gene D. Holcomb—Stoughton
Karl Kolka
Connie Dillman—Milwaukee
Kermet Biefeld—Watertown
Frank Milton
Charles Kowalski—Milwaukee

Herbert Helser—Beloit
Dale Gritzmacker
Richard Hartwig—Milwaukee
Victor Helser—Beloit
John Trawitzke—Milwaukee
John Gorishek—Milwaukee
Ronald Nieman
Mrs. Don Spauth
J. W. Johnson
Marvin Bakken—Mt. Horeb
Walter H. Gall
Foster V. Hine
Harry C. Oppert
Rufus F. Wells
J. L. Anderson—Waunakee
Leonard P. Drescher
Clarence Molbreak
Roy Ary
Stanley Krugman

MILLER FUR & SPORTING CO.

WISCONSIN'S COMPETITIVE FUR MARKET

PHONE 56

Wauaukee, Wisconsin

WISCONSIN BRICK CORP.

2840 University Ave.

EVERYTHING FOR MASONRY BUILDING

BRICK — STONE — BLOCK — TILE

MORTAR — PLASTER — CEMENT — LATH

THE BRASS RAIL

2869 University Ave. — Madison, Wis.

MADISON'S UNIQUE BAR AND COCKTAIL LOUNGE

WITH THE PICTURE WINDOWS

Jack Wagner, Prop.

Kessenich's

MARINE SALES & SERVICE

Johnson Motors

Crestliner, Starcraft, Thompson, Shell Lake and Bell Boy Boats

Gator Trailers

1405 Monroe St.

Phone ALpine 6-2146

Prize Donors

- Ackley's Sport Shop
3062 E Washington Ave.
- Joe's Liquor Store
702 W. Washington Ave.
- Up Town Bar
Watertown
- Ohio Tavern
- Jason Johnson Jewelers
2094 Atwood Ave.
- Mael & Moore Barber Shop
E. Broadway
- Crown Cleaners & Laundry
2807 University Ave.
- Larrabee's Market
Waterloo
- Gle--N-Ann's Cozy Inn
223 N. Francis St.
- Mac's Bar
2116 Atwood Ave.
- Struck & Irwin Fuel Co.
826 Williamson St.
- Mifflin Beauty Salon
307 W. Mifflin St.
- Steves Barber Shop
- Harley's Hardware
3809 Mineral Point Rd.
- Piggly Wiggly Store
2701 University Ave.
- Party Port
2901 University Ave.
- Alderson's Service Station
3742 Speedway Rd.
- Beacon Tavern
1700 E. Broadway
- Block System Inc.
2017 Winnebago St.
- Thurber Beverage Co.
3038 Atwood Ave.
- Hauser Beauty Salon
1415 University Ave.
- Sunset Bar
- Riley's West-Side Drive-In
2900 University Ave.
- Arians Bar
- Brass Rail
2869 University Ave.
- B & B Bar
2017 Atwood Ave.
- Key Wine Badger Beverage, Inc.
5509 Monona Drive
- Sunshine Super Market
1402 Williamson St.
- Bills Shoe Repair
2015 Atwood Ave.
- Dean Furniture Co.
5005 Monona Drive
- Busse's Midway Tavern
2005 Sherman Ave.
- Rock-A-Bye Youth Center
1957 Winnebago St.
- Home Makers Appliance &
Furniture Store
2323 Atwood Ave.
- Scotts Beauty Shop
2143 Atwood Ave.
- Ole's Clothes Shop, Inc.
2322 Atwood Ave.
- Irv Goff Music Co.
2330 Atwood Ave.
- Atwood Hardware Inc.
2309 Atwood Ave.
- Flagstad Flower & Gift Shop
1965 Winnebago St.
- Red's Bar
2129 Atwood Ave.
- Pete's Pet & Hobby Shop
1917 Winnebago St.
- Mama Amato's Restaurant
2910 Atwood Ave.
- Busse's Midway Tavern
2005 Sherman Ave.
- C & P Shopping Center
3830 Atwood Ave.
- Bud's Fair Oaks Bar
2916 Atwood Ave.
- Sunnyknoll Grocery
3162 Milwaukee St.
- Liddicoat's Market
2925 Atwood Ave.
- Weinshel's Department Store
2926 Atwood Ave.
- Fair Oaks Barber Shop
2914 Atwood Ave.
- Wilcox Shell Service
2733 Atwood Ave.
- Karabis Cafe
2201 Atwood Ave.
- Sphars Garage & Service
3200 Milwaukee St.
- Loftsgordon Lumber Co.
2402 Atwood Ave.
- Bob Harpel Service Station
2313 Atwood Ave.
- Eastwood Army Store
2098 Atwood Ave.
- East Side Liquor Store
2047 Atwood Ave.
- Clydes Liquor Store
3322 Milwaukee St.
- Ross Service Station
3901 Dempsey Rd.
- Fair Oaks Texaco Service
2846 Atwood Ave.
- First & Last Chance Tavern
2937 Atwood Ave.
- John McCaughey Service Station
2132 Atwood Ave.
- Clarks Super 100 Gasoline
2801 Atwood Ave.
- Capital Cleaners
2138 Atwood Ave.

OPEN SUNDAY 9 TILL 6 — DAILY 9 - 6 FRI. UNTIL 8 P.M.

HOUSEWARES
SPORTING GOODS — GROCERIES — BEER
PAINTS — MEATS

Schubring's Shopping Center
SUPER MARKET

1438 N. Sherman Ave.

Phone 4-6243

NOYOLA FOOD SHOP

2904 MILWAUKEE ST.

Open Weekdays 8 A.M. to 8 P.M.

Sundays 9 to 1 and 4 to 8

Madison 4, Wis.

CHerry 4-1860

Busse's Midway

2005 N. Sherman Ave.

CH 4-9838

SANDWICHES

BOTTLE GOODS

BEER

Music Box Tavern

MEET YOUR FRIENDS
AT
2302 PACKERS AVE.
MADISON

YAHARA FISHERMAN EUCHRE PARTY
EVERY FRIDAY NIGHT

PRIZE DONORS (Cont.)

Rays Bar 2230 Winnebago	Willows Tavern Rt. 1, Waunakee, Wis.
Voges Service, Inc. 3826 Atwood Ave.	Golden Pheasant 2109 S. Park St.
Indian Head Tavern 2007 Winnebago	Four Lakes Cleaners 612 S. Park St.
Bob's TV Sales & Service 602 North St.	Hooker's Resort Poynette, Wis.
Badger Rubber Stamp Shop 1853 Jenifer St.	Northwestern Lunch 1310 Williamson St.
Holmes Tire & Supply, Inc. 431 West Main	Barneys Shell Service Station 2810 E. Washington Ave.
Wing's Inn 3052 E. Washington Ave.	Gordys Bake Shop 1409 University Ave.
Al Ludahl	Transport Oil Co. 2842 University Ave.
Hauser Beauty Salon 1415 University Ave.	Cuba Club 3416 University Ave.
Kelly's Coffee Shop 1413 University Ave.	Crawford Service Station 2408 University Ave.
Ed's Service Station & Garage 1443 University Ave.	Cliff Fry Distributors Rockford, Ill.
Vivian & Dukes Restaurant Sprague, Wis.	

WALTER J. FELL

Plumbing

Our Specialties
Remodeling & New Work
Repair Service
Electric Sewer Rooting

2017 Corscot Ct.

CHerry 4-5331

BADGER RADIO CAB

AL 6-5566

RADIO DISPATCHED — The Cab With the Red Top

Low Zone Rates

Sight Seeing Tours

12 N. Few Street

Madison

MENDOTA MARINE DISTRIBUTORS, INC.

Boating & Fishing Headquarters

Summer & Winter

Glasspar, Crosby, Larson Botved Boats

Evinrude & Mercury Motors

Middleton Beach

Phone Madison CE 3-1474

PLASTERING

CHARLES A. SCHEPP

ATTENTION CONTRACTORS

We Invite Your Request for Bids.

Home Owners

We Will Be Happy to Estimate Your Job—

Large or Small

New or Repair Work — Plastering and Stucco Work

MIDDLETON R1

TE 6-4140

TOFTES BOAT & MOTOR SALES

BOAT — MOTOR — TRAILER HEADQUARTERS

Scott-Atwater Outboards — 36 h.p. to 60 h.p.

Cruiser's Inc. Lap Strake Boats

Aristo Craft Sport Boats

Wolverine—Naden Aluminum Boats

Glass Runabouts—Shi Boats

M.F.G. Glass Clinchers

Kit Boat Headquarters

Complete boat repairing and motor tuning by factory trained personnel.

FIBERGLASS HEADQUARTERS

1442 Northern Ct.

ALpine 5-1726

Esquire Club

STEAKS — CHICKEN — FISH

B A R

1025 N. SHERMAN AVE.

As a phase of the work of the Yahara Fisherman's Club, metal signs like that aside have been constructed and distributed for display at many public access points. This attractive four color sign was distributed before the most recent anti-litter laws, and we hope that these will serve as an additional reminder of the fact that there are laws governing the usage of our lakes and streams.

The Yahara Fisherman's Club believes that proper placement of these signs will serve a worthwhile purpose and the club takes pride in this work. Many members of the club have promoted and participated in various clean up campaigns and we are certain that these signs will prove to be of benefit.

Limited copies are available for posting during the coming season and the Yahara Fisherman's Club plans to distribute the remaining signs throughout the Yahara basin.



CHAPTER 353, LAWS OF 1957

(No. 558, A.)

AN ACT

AN ACT to create 29.288 of the statutes, relating to throwing refuse into waters and providing penalties.

The people of the state of Wisconsin, represented in senate and assembly, do enact as follows:

29.288 of the statutes is created to read:

29.288 THROWING REFUSE IN WATERS. Whoever deposits, places or throws into any waters within the jurisdiction of the state, or leaves upon the ice thereof, any cans, bottles, debris, refuse or other waste material, shall be fined not more than \$100 or imprisoned not more than 30 days, or both. In addition each license issued to any such person under this chapter shall be revoked by the court in which such person is convicted and he shall not again be eligible for a license under this chapter for a period of one year.

DEAN FURNITURE CO.

5005 MONONA DRIVE

*A Large Selection of Quality Furniture
Always a Sale Price*

AC 2-1444

A Complete Line of Fishing Supplies

Open Every Night until 10:30

Orie's Pharmacy

408 East Wilson St.

Madison 3, Wis.

Stadium Bar

1419 MONROE STREET

JINGLES O'BRIEN, Prop.

**For materials such as sand, washed stone,
crushed rock, etc., Call:**

Yahara Materials, Inc.

Waunakee, Wis.

Phone 68

SCHROEDER FUNERAL HOME

3325 E. Washington Ave.

One of America's Outstanding Funeral
Homes

Madison, Wisconsin
DIAL: CHerry 9-6666

FISHERMANS
HEADQUARTERS

At

MICKEY'S TAVERN
PHEASANT BRANCH

Middleton, Wis.

L A K E

E D G E

B A R

111 COTTAGE GROVE RD.

DIZON'S MENS WEAR
SINCE 1920

DUOFOLD 2 layer Underwear
CHIPPEWA &
PENDLETON Woolens
RED WING &
BALL BAND Insulated Boots
402 E. WILSON

Capital City Awning Co.

2065 HELENA STREET
MADISON WISCONSIN

AL 6-7934

TENT RENTALS
COVERS — AWNINGS

Harold Neesvig

Zander's Creamery

MEADOW BRAND BUTTER

SWEET CREAM BUTTER

BULK PAC

CROSS PLAINS

PHONE SW 8-2481

OPEN DAILY — 8:00 A.M. to 10:00 P.M.

NORRIS COURT GROCERY

912 E. Johnson St.

Homemade Salads Daily

Bar-B-Q'd Ribs Saturday and Sunday

COLD BEER

NO FISH . . .

**BUT LOTS OF
GOOD CLOTHES
AT**

CAPITOL TOG SHOP

231 State

COMPLIMENTS
OF

KARLS HDWE. CO.

1398 WILLIAMSON ST.

AL 7-1630

TOOLS - TACKLE - TOYS

**UNION CORNERS
S H E L L**

Pat & Doyle Dyer

2601 E. Washington

CH 9-3908

**RITCHIE PLUMBING,
HEATING, SHEET
Metal & Air Conditioning Co.**

2237 Winnebago Street

Madison 4, Wisconsin

CH 4-5130

RAY'S BAR

2236 Winnebago St.

HOT TAMALES — GET YOUR BOTTLE BASS HERE

KRESS PACKING COMPANY, INC.

**COUNTRY STYLE SAUSAGE
HICKORY SMOKED HAM and BACON**

Tel. 330

WATERLOO, WISCONSIN

PAUL ESSE SERVICE STATION

Mobil Products

Phone ALpine 5-9965

**1102 Regent Street
Madison, Wis.**

WELCH PLUMBING CO.

1507 MONROE STREET

Madison

Wisconsin

TESAR & RYAN TAVERN

**317 STATE ST.
MADISON**

LIQUORS — SANDWICHES

T H E P E R C H

**HIWAY 113
WESTPORT**

T A V E R N

J. S. TIMLIN LUMBER CO.

QUALITY

LUMBER — WOODWORK — FUEL OIL

2702 University Ave.

Dial CEdar 3-5335

Eastwood Army Store

MENS AND BOYS FURNISHINGS, SHOES
OUTDOOR AND ARMY MERCHANDISE AND
CAMPING EQUIPMENT

2098 Atwood Ave.

Telephone 4-6383

Open Mon. & Fri. till 9 P.M.

PARRAKEET PET SHOP

Clifford R. Olson

Corner Seminole Hwy. &
West Belt Line

Madison 5, Wisconsin

SCHOEP'S ICE CREAM CO.

Madison, Wis.

514 Division St. AL 6-0688

Ole's Clothes Shop INC.

Clothes - Furnishings - Shoes

Largest Exclusive Men's Store
on the Great East Side

2322 Atwood Ave. CH 4-8837

MADISON, WIS.

McGovern's

CLUB - MOTEL - INN

Sun Prairie
Hy. 151

Portland
Hy. 19

Motel Res. Phone CA 7-2505

SPORTSMANS BAR

205 S. Baldwin St. — AL 6-9585

WILLARD SCHWARTZ

JOE HERALE

Home of Honest Fisherman
No Liars

BOTTLE & PACKAGE GOODS
SANDWICHES

ROMAN INN

SPAGHETTI & RAVIOLI
OUR SPECIALTY

Serving 11:00 A.M. to Midnight Plus
Under New Management — Max & Marge Victor

46 N. PARK ST.

AL 6-9418

NORRIS COURT GARAGE

PHILLIPS 66 GAS - GREASING - WASHING
STORAGE.

PHONES: ALpine 6-7271 - 6-9134

852 E. Johnson St.

Madison 3, Wis.

AVOID A WRECKER — CALL A CHECKER

CHECKER CAB COMPANY

DIAL

AL 6-3191

—— 5 CAN RIDE FOR PRICE OF 1 ——

ALpine 6-0054

THE TROPHY SHOP

Trophies, Plaques, Engraving Service
Special Order

PAUL D. HENNIE

9 West Main Street

Madison 3, Wisconsin

Sherman Floral and Greenhouse

DON RATHBUN

617 N. SHERMAN AVE.

"Flowers sent anywhere in the World"

Telephone CH 4-3559

PARTY PORT EAST

The Best

BEERS - WINES - LIQUORS

2 Blocks North Burrows Park
PARKING LOT

521 N. Sherman Madison, Wis.

BOWL-A-VARD LANES

MADISON, WIS.

OPEN BOWLING

Automatic Pinspotters

ALMA'S TAVERN

A FRIENDLY PLACE
TO MEET

Highway 12 & 13
North of Middleton, Wis.

Rusk GUN SHOP

Guns - Parts - Reloading Tools
Complete Gun Repair

308 W. Lakeside St.
AL 5-1546

PAT'S TAVERN

FRITZ and ELAINE, Props.

601 N. Fair Oaks Ave.

Madison

Open 8:00 A.M. Sunday

ELVER MOBILE HOMES

YOUR FRIENDLY TRAILER DEALER

George, Dorothy and Joe Elver

3162 EAST WASHINGTON AVE.

PHONES CH 4-7411 — CE 3-0359

MADISON, WIS.

24 Hour Service

**Lakeland Bait Depot
1713 Commercial Ave.
Madison, Wis., CH 9-3300**

**Bait & Tackle of all
kinds for Winter or
Summer Fishing.**

**Good Luck in the
Percharee.**

24 Hour Service

**Lakeland Ins. Agency
1713 Commercial Ave.
Madison, Wis., CH 9-3300**

**Insurance of all types
Your Protection
Our Business
Your Satisfaction
Our Pleasure.**

ronlie's

FLOWERS & GIFTS

2742 E. Johnson St.

CH 9-8535

Free Delivery

**GOOD LUCK
BILL ALT**

**THE OLD HEIDELBERG
TAVERN**

**1206 Regent St.
Madison, Wis.**

**PHONE
6-0014**

**BJORGO OTTUM
Prop.**

**Williamson St.
At Thornton Ave.**

**VIKING SERVICE STATION
GULF GAS AND OILS**

TIRES, BATTERIES, WASHING and GREASING

Hult's

CAPITAL GARAGE, INC.

AL 5-6721

608 EAST WASHINGTON AVENUE

Serving the Madison area with CHEVROLET for over 44 years
"Be Our Guest For a Pleasure Test"

**Mel and Guy's
SERVICE**

1831 E. Wash. Ave.

GULF PRODUCTS

Pick-up and deliver

PHONE 4-0412

SPORTSMEN'S HOME

Shorewood Shopping Center

Complete Line of
**FISHING and HUNTING
EQUIPMENT and
All Other Sports**

3240 University Ave.

IT PAYS TO LOOK WELL

Lobre's Barber Shop

INSURANCE BLDG.

119 Monona Ave.

ED - MACK - ERNST

DIAL 6-4186

LIPPNER'S

**CAFE and
BANQUET ROOM**

Steve, Angie and Wayne Lippner

2617 E. Washington Ave.

Madison, Wisconsin

FISHING for VALUES ? ?

**LUMBER HARDWARE
HOUSEWARES**

BROOKWOOD

HARDWARE HOUSE

1—2310 UNIVERSITY AVE.

**2—4430 NAKOMA RD.
(Brookwood Village)**

**3—702 E. OLIN AVE.
(Across from Fairgrounds)**

When you ask for BEER
ask for "CB"

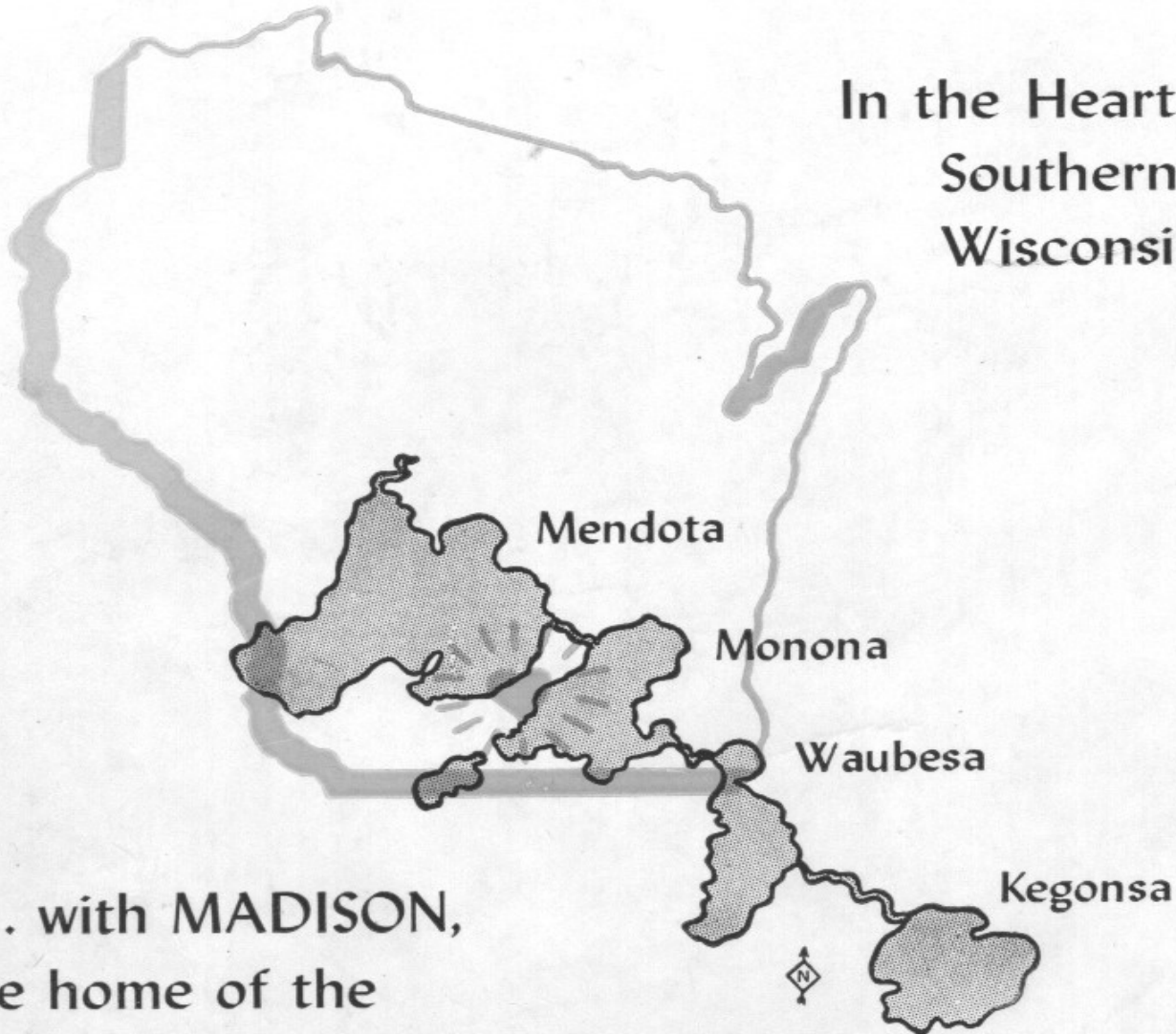


It's Brewed to Everyone's Taste

FAUERBACH BREWING CO. — MADISON, WIS.

The Yahara Basin Chain of Lakes

In the Heart of
Southern
Wisconsin...



... with MADISON,
the home of the
YAHARA FISHERMAN'S CLUB
nestled in their midst

CRAFTSMAN PRESS —  5

BOB *Leske's* **SUPPER CLUB**

Academy 2-1919 6401 MONONA DR.

Try Our Famous Salad Bar

CHARCOAL BROILED STEAKS

CHICKEN — SEA FOOD

SERVING 11 a.m. TO MIDNIGHT